

Abhiman's
Raj Palace

Commercial and Residential
COMPLEX

Mannagudda, Mangalore

Location Map



Abhiman's
Raj Palace



Promoters



ABHIMAN Constructions

9th Floor, Abhiman Chambers,
Near Bunts Hostel Circle, Kadri Road,
Mangalore - 575 003
Ph : +91 824 2446563, 2446579
Mobile : +91 98450 99347
E-mail : abhimangroup@asia.com
info@abhimanconstructions.com
Website : www.abhimanconstructions.com

Architects

**YASHAVANTH KUMAR RAI
& ASSOCIATES**

ARCHITECTS, STRUCTURAL & INTERIOR DESIGNERS
M G Road, Mangalore - 575 003
E-Mail : raiyk04@yahoo.co.uk

Structural Engineers

P.M.C.:



Abhiman's
Raj Palace

Touching your inner aspirations ...

Looking for Space, Comfort and a touch of Luxury ?

This is the perfect home for you! Situated in Mannagudda this peaceful locality falls in easy reach of the city centre, giving easy access to important places such as Schools, Shopping Arcades, Hospitals, Market, Bus stand and places of Worship.

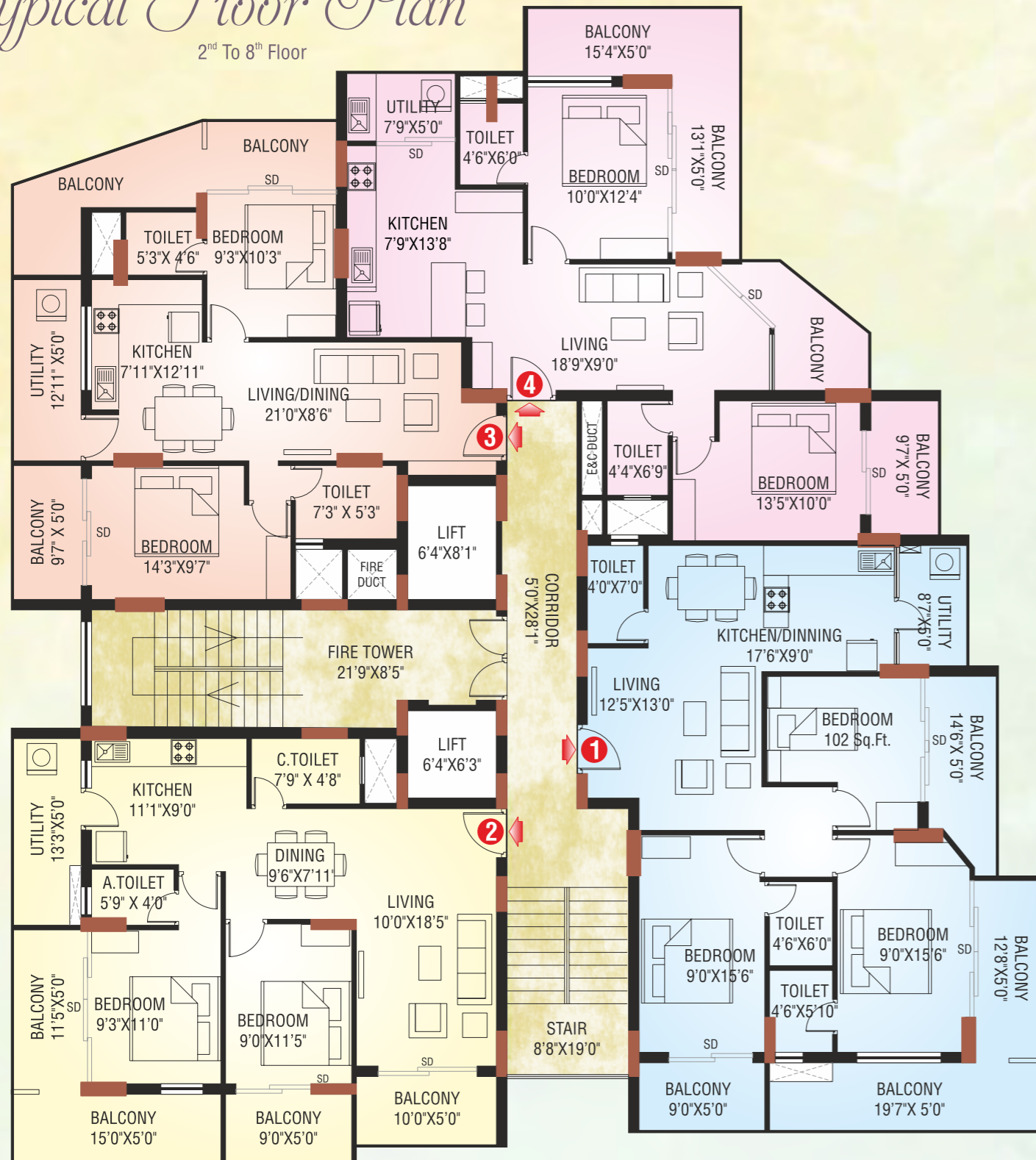
Aesthetic consideration of Design & Layout, Quality in terms of Materials, Technological excellence as well as service defined by consistency with our **30years of experience in the field** with over thousand happy customers is what places **Abhiman Construction** above the rest in the building industry. Providing transparency in dealing that credits a reliable base for every home seeker.

rest assured with **Abhiman Construction** the name you can trust with commitment you can expect the finest.



Typical Floor Plan

2nd To 8th Floor



Flat No. 1 - 3 BHK



Flat No. 2 - 2 BHK



Flat No. 3 - 2 BHK



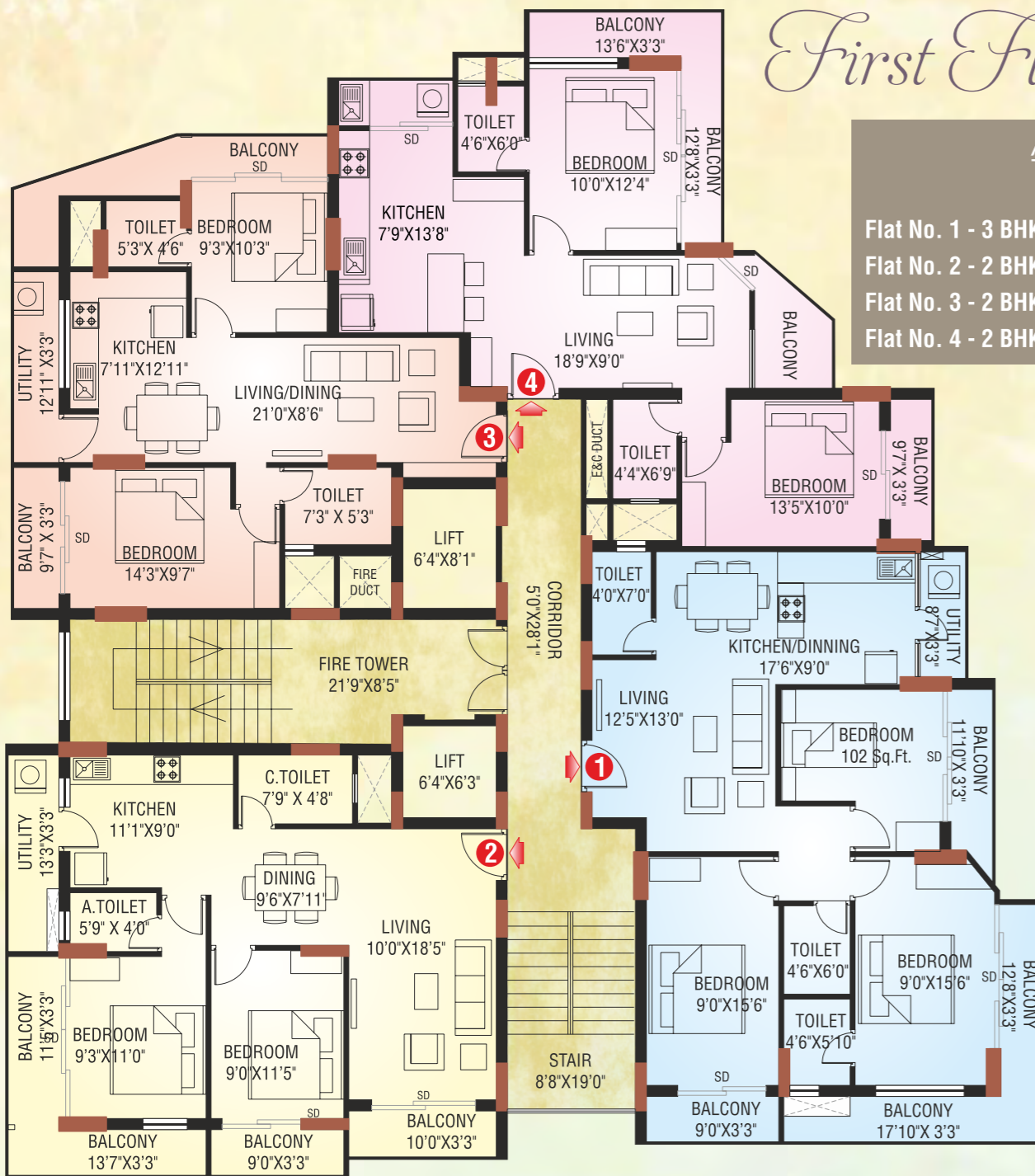
Flat No. 4 - 2 BHK

Area Statement

	Carpet Area	Super Built-up Area
Flat No. 1 - 3 BHK	1085 Sq.Ft	1588 Sq.Ft
Flat No. 2 - 2 BHK	913 Sq.Ft	1328 Sq.Ft
Flat No. 3 - 2 BHK	800 Sq.Ft	1170 Sq.Ft
Flat No. 4 - 2 BHK	907 Sq.Ft	1304 Sq.Ft



First Floor Plan



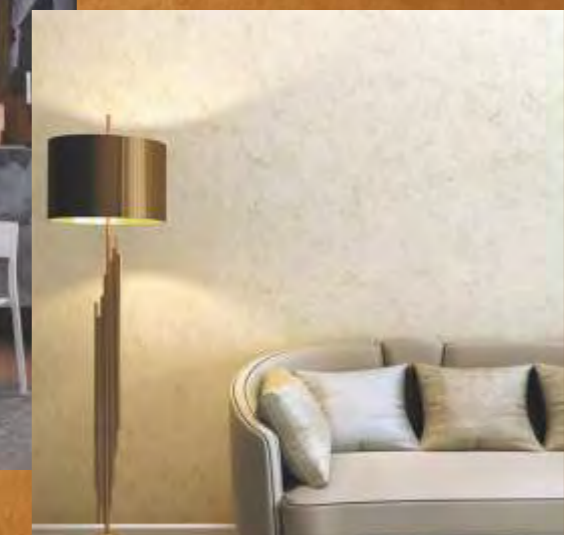
Area Statement

	Carpet Area	Super Built-up Area
Flat No. 1 - 3 BHK :	976 Sq.Ft	1415 Sq.Ft
Flat No. 2 - 2 BHK :	820 Sq.Ft	1192 Sq.Ft
Flat No. 3 - 2 BHK :	715 Sq.Ft	1045 Sq.Ft
Flat No. 4 - 2 BHK :	790 Sq.Ft	1140 Sq.Ft



Specifications

- ◆ Flush laminated / Enameled doors.
 - ◆ Aluminum Windows with Steel grills.
 - ◆ All rooms 2' X 2' Vitrified tiles flooring.
 - ◆ Bathroom flooring antiskid ceramic tiles
 - ◆ Coloured glazed tile skirting full height for bathrooms.
 - ◆ Fibre doors for bathrooms.
 - ◆ Polished granite over the kitchen platform with steel sink.
 - ◆ Glazed tiles upto 2' height above kitchen platform.
- PAINTING**
- ◆ Putty finish with acrylic distemper for internal walls and ceilings.
 - ◆ Apex or equivalent quality cement paint for outside walls.
- ELECTRICAL**
- ◆ 20/25 nos electrical points including plug and 3/4 nos power points.
 - ◆ Modular switches & Finolex / RR cables / V Guard cables or equivalent.
- PLUMBING / SANITARY**
- ◆ E.W.C : Cera / Parryware / Hindware or equivalent
 - ◆ Washbasins : Cera / Parryware / Hindware or equivalent
 - ◆ Sanitary / Plumbing Fixtures : Jaguar / A.R.K. or equivalent



Common Facility

- ◆ GENERATOR for common and apartment lighting with sound proof enclosure.
- ◆ Intercom facility from watchman room to all apartments.
- ◆ VITRIFIED FLOOR TILES for common passages.
- ◆ Society room & Gym room in terrace floor.
- ◆ SECURITY ROOM in ground floor.
- ◆ Fire fighting system as per norms.
- ◆ One 8 passenger & One 10 passenger Automatic Lift.
- ◆ Dedicated CAR PARKING in basement & Ground floor at extra cost.
- ◆ Reticulated Gas Connection to all the apartments.
- ◆ Provision CABLE T.V. & telephone connection.

